



contex

WHEN IMAGING MATTERS



[Contex Scanners]

**the world leader in
scanning technology**



Transform your business with a high performance scanner from Contex.

The ideal solution for any business whether your application needs are **scan-to-file** or **scan-to-print**. Investing in Contex' extensive range of scanners provides your business with direct benefits and results that can be measured on the bottom-line. In fact, our commitment to innovation makes us the global leader in large format color scanning. No matter what your scanning needs are, Contex has a professional solution that ensures the best return on your investment.

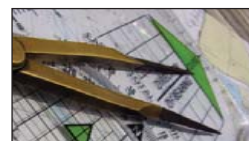
Professional and perfect scans – every time!

Contex sets the industry standard for large format scanning and copying needs. Color is captured at 48-bits and B/W at 16-bit bringing out perfect detail and depth in any image. With the highest quality camera lenses and 4-linear CCD's, using all-digital cameras.

Feature Highlights:

- > **PRECISION:** high resolution with 0.1% ±1 pixel accuracy [**industry best**]
- > **IMAGE:** outstanding image quality with superior resolution
- > **WIDTH:** imaging area from the ultra wide 54" to the flexible 18x25" flatbed
- > **SPEED:** superior color and monochrome scanning speeds
- > **PRINTERS:** compatible with many professional large format printers: HP, Canon, Epson, Xerox.

– quality, speed and performance set our scanners apart from competitors!



[products/applications]

"Our Contex scanners have made us a much stronger player in the niche. What used to be a 2-4 hour job now takes 8-12 minutes."

Philip Burgess, Manager, Scanning Services

Applications:

Join the many businesses that benefit from investing in a scanner for secure document, map and image storage in our scan-to-file solutions. Or join the large format scanning revolution and offer customers the extra service that makes the difference.

Solutions:

Document Archiving - Create on-line access and control of vital company assets such as drawings, electrical schematics and facility plans.

Copy Shop & Repro - Keep your competitive edge - see how Contex scanners turn copy shops into profit shops with superior color and quality.

Government Agencies - Contex scanners and software help governments modernize their archive and infrastructure for more efficient workflow operations.

CAD & AEC - High quality components and a unique design ensures that Contex scanners capture small type and small details in drawings clearly.

GIS & Mapping - Contex scanning technology ensures that small type, small details and color changes in maps are precisely captured.

Oil, Gas & Mining - Contex scanner solutions can scan and file oil log files, CAD drawings, geological maps and seismographic prospecting information.



SCANNING, PRINTING & COPYING

Software designed exclusively for Contex scanners.

WIDEimage^{NET} is a fully featured scanning software solution for Contex wide format scanners. The application is designed to unlock the full potential of your Contex scanner. With the capabilities to scan, print, view, and edit images with ease, WIDEimage supports a wide range of file formats including PDF, JPG, and TIFF. Also installed with the WIDEimage software is a TWAIN driver to use with your favorite archiving or imaging software. WIDEtwin has all the same scanning functions as WIDEimage and imports images into any TWAIN compliant software.

- > Full support for Contex scanners
- > Ultra-fast scan-to-file
- > Batch scanning and conversion
- > Powerful editing tools
- > Fast and robust viewer
- > Intelligent monochrome clean-up
- > Scan to PDF

JETimage^{NET} is the complete copying software for Contex wide format scanners. The application is designed to unlock the full potential of your Contex scanner as only Contex software can. JETimage^{NET} supports most large format printers for high-quality copying. JETimage^{NET} supports both keyboard and touch-screen interfaces.

JETimage^{NET} copy software is the ultimate tool for professionals in reprographic and copy shops. It is designed especially for large format copying delivering speed, flexibility and production of high quality color matched copies or cleaned-up monochrome copies.

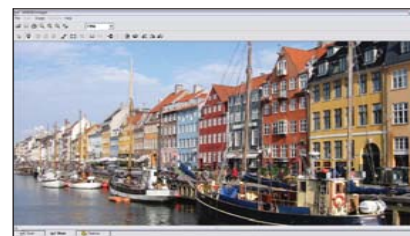
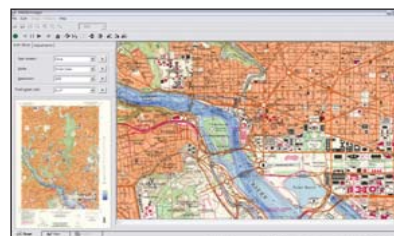
- > Vivid, high-quality color copies
- > Clean, crisp & clear monochrome copies
- > Precise color matching
- > Scan-to-file
- > Print-from-file
- > Touchscreen compatible
- > Scan, Copy, and Print to network

WIDEsystem^{NET} Scanner Driver contains scanner drivers and a control interface to integrate your wide format scanner with Windows and your overall system. Allows you to view the scanner's status through an icon on the system tray.

WIDEsystem^{NET} enables companies to share one or more scanners across its departments no matter their locations. With WIDEsystem^{NET} and compatible NET scan or copy software, a scanner can be shared by computers or it can send scans directly to computers on the local network.

To learn more about all our software solutions, please visit us at:

www.contex.com/software/overview/



software
solutions

WIDEimage^{NET}
with WIDEtwin

JETimage^{NET}

WIDEsystem^{NET}

WIDEmail

WIDEcapture for
Adobe Photoshop

WIDEcapture for
AutoCAD

Scanner
Maintenance
Software

WIDEtwin Driver

contex
WHEN IMAGING MATTERS



[product specifications]

Contex Product Range - Solutions for Business Growth.

Contex offers an extensive product range for large format business needs. Join the large format color scanning revolution with guaranteed value for money with every purchase of a Contex product. See for yourself why Contex is the market leader when it comes to speed, precision and performance.

SPECIFICATIONS	MAGNUM G600		PUMA G600 iJET		CHROMA G600		CRYSTAL G600		PREMIER G600		COUGAR G600		CHAMELEON G600		HAWK-EYE G36		TOUCAN G25		COPY-mate G18 iJET			
	BASE	PLUS	BASE	PLUS	BASE	PLUS	BASE	PLUS	BASE	PLUS	BASE	PLUS	BASE	PLUS	BASE	PLUS	BASE	PLUS				
Scan & Media Width:	Max Scan Width: in inches		54		42		42		42		42		36		36		25		18			
Cameras:	4-linear CCDs (RGB Triplets+Panchromatic BW) 48-bit Color Data Capture, 16-bit Graytone Data Capture, All Digital Cameras		4		4		3		3		3 B/W		3		3		1		1			
Pixels:	(in pixels)		120,000		120,000		90,000		90,000		22,500		77,000		77,000		30,000		32,000		30,000	
Resolution:	(in dpi)		600		800		600		600		600		600		600		200		424		400	
Enhanced Resolution:	(in dpi)		1200 9600		1200 9600		1200 9600		1200 9600		1200 9600		1200 9600		1200 9600		1200 9600		1200 9600		9600	
Scan Accuracy:	0.1% ± 1 pixel		✓		✓		✓		✓		✓		✓		✓		✓		✓		✓	
Scanning Speed:	(400 dpi turbo, 24-bit RGB)		1.5 3.0		1.0 1.5		1.5 3.0		0.6 1.0				1.5 3.0		0.6 1.0		1.5 3.0		0.5 1.5		3.0	
inch per second:	(400 dpi turbo, 8-bit Index)		3.0 3.0		3.0 3.0		3.0 3.0		3.0 3.0				3.0 3.0		1.5 1.5		1.5 3.0		1.5 1.5		3.0	
	(400 dpi turbo, Graytone & B/W)		12.0 12.0		12.0 12.0		12.0 12.0		12.0 12.0		6.0 12.0		12.0 12.0		12.0 12.0		10.0 10.0		4.0 4.0		5.0	
Maximum Thickness:	0.6" (15 mm) Automatic Thickness Adjustment		✓		✓		✓		✓		✓		✓		✓		✓		✓		flatbed	
Digital Image Processing:	Dual 2-D Adaptive Enhancement & Adaptive Gray		✓		✓		✓		✓		✓		✓		✓		✓		✓		✓	
iJET Technology:	One Touch Copy Directly to USB or Network Printer One Touch Scan directly to USB Harddisk or Network PC Printer without PC		N/A		✓		N/A		N/A		N/A		N/A		N/A		N/A		N/A		✓	
Scan Modes:	24-bit Color, 8-bit Feature Extraction/Index Color 8-bit Graytone, Copy Modes with Grayshades 1-bit B/W, B/W Dual 2D-Adaptive Modes		✓		✓		✓		✓		B/W		✓		✓		✓		✓		✓	
Color Adjustment:	3x3 Matrix Multiplier, Independent RGB Tone Curves (Gamma), Independent B/W Point Setting		✓		✓		✓		✓		✓		✓		✓		✓		✓		✓	
Color Space:	NTSC, sRGB		NTSC, sRGB		sRGB		NTSC, sRGB		NTSC, sRGB		NTSC, sRGB		NTSC, sRGB		NTSC, sRGB		NTSC, sRGB		NTSC, sRGB		sRGB	
Light Source:	Color matched fluorescent lamps, Color Renderin Index (CRI) >95		✓		✓		✓		✓		✓		✓		✓		✓		✓		✓	
All-Wheel Drive:	Contour Adjustment, Broad Precision Rollers, Automatic Thickness Adjustment Control (ATAC), Optimal Guide Plate Grip (up to 0.6"), Built-in Roller Axel Pressure Sensors		✓		✓		✓		✓		✓		✓		✓		✓		✓		✓	
Interface:	FireWire, USB2 (High Speed), STI (Still Image Interface), WIA (Win Image Acquisition), TWAIN		✓		Ethernet		✓		✓		✓		✓		✓		✓		✓		Ethernet	
Auto-Maintenance:	Auto Alignment, Stitching Monitoring & Correction, Basic & Precision Color Calibration		✓		✓		✓		✓		✓		✓		✓		✓		✓		✓	
Power Management:	Temperature Control, Sleep Mode Programmable Power-Up Timer, Real Time Clock		✓		✓		✓		✓		✓		✓		✓		✓		✓		✓	
System Software:	Included: WIDEsystem TOOLS: Scanner Drivers, Maintenance & Utilities		✓		✓		✓		✓		✓		✓		✓		✓		✓		✓	
Host Platforms:	Windows and Power Macintosh - see www.contex.com for OS support details		✓		✓		✓		✓		✓		✓		✓		✓		✓		✓	

Contex publication "Contex Scanners" 2007 © Contex A/S. JETimage, WIDEimage, WIDEsystem and Contex are trademarks of Contex A/S. Apple and Macintosh are trademarks of Apple computer, Inc. registered in the USA, and other countries. Microsoft and Windows are registered trademarks of Microsoft Corporation in the USA, and other countries. All other brand and product names are trademarks or registered trademarks of their respective companies. The information contained in this document is subject to change without notice. Contex makes no warranty of any kind with respect to this information. Contex specifically disclaims the implied warranty of merchantability and fitness for a particular purpose. Contex shall not be liable for any direct, indirect, incidental, consequential, or other damage alleged in connection with the furnishing or use of this information. Resolution (in dpi) is the real performance indicator obtained from Contex high quality CCDs, optical lenses and patented advanced digital processing.



[key selling points]

Csense Technology

With the unique Csense data management technology, Contex offers the highest quality in data processing results producing consistent and sharp scans. Csense efficiently and rapidly perform intelligent image capture performance, guaranteeing precise image reproductions. The Csense processing technology is an integrated technology incorporated in all Contex scanners ensuring professional and perfect scans – every time!

Scanning Superiority

Contex sets the industry standard for professional wide format scanning and copying needs. Colors are captured at 48-bits for maximum precision, and reproduced in vibrant colors. Black-and-white is captured at 16-bits, bringing out detail and depth in any drawing. Both are standard features in Contex scanners, making Contex the global leader in image capturing.

Resolution

Most scanners now feature 600 dpi. The 600 dpi are Contex real dpi. Real dpi is the result of our advanced algorithms and new unparalleled supersensitive optical systems. Resolution (in dpi) is the real performance indicator obtained from Contex high quality CCDs and optical lenses, and patented advanced digital processing.

Ultra Fast Scanning Speeds

Maximize productivity with the ultra fast scanning speed performance in all Contex scanners. With scanning speeds of up to 12 inches per second for full color originals, Contex delivers the fastest scanners on the market today scanning color originals at 400dpi turbo in unsurpassed resolution up to 600dpi.

CCD Technology - All-Digital Cameras

Contex uses All-Digital cameras with advanced point-of-origin capture and on-board digital conversion ensuring minimum noise and an extended dynamic range. The unique four-linear CCD technology, with a special panchromatic line, ensures that no colors are lost when scanning monochrome. Quality color-matched fluorescent lamps ensure the market's highest standards for color correctness.

Pixel

With the 4-linear CCD, Contex scanners offer the highest pixel count in the industry. Pixel is one of the most important measures to ensure a high accuracy and scanning quality.

Accuracy Lens Enhancement Technology (ALE)

Contex has taken scanning precision to new levels by developing patented Accuracy Lens Enhancement (ALE) technology that electronically maintains $0.1\% \pm 1$ pixel precision across any two points of the scan line thus exceeding even the most rigid requirements in the industry today. Contex delivers a very high grade of precision stability in the scanned image.

One Touch Scanning

Contex scanners operator's panel is designed with convenient programmable action buttons for initiating common tasks directly from the scanner. Each button immediately activates a scan and opens the image in an appropriate application and format. The scanner comes with action buttons for scanning, copying and e-mailing loaded originals and can be reconfigured for other tasks. Scanning has never been easier!

All-Wheel-Drive Cares for your Original

All-Wheel-Drive has been designed to ensure high standards for a perfectly straight scanning path with an optimal hold across the whole width of large documents. Contour adjustment and broad synchronized rollers ensure a perfectly straight scanning path without using unnecessary force so you avoid both image distortion and damage to fragile originals.

Precision Color

A new wide format scanner comes calibrated from the factory, but as time goes by, components and lamps will change character and affect color output. The unique Precision Color system lets you maintain perfect color results by harmonizing current scanning factors. You can calibrate in the field at any time, so you are always ensure stable and predictable color output.

Copying Made Easy

Connect a Contex scanner with a wide-format printer and you get the perfect large format color and monochrome digital copier. With the scanner's high precision of details and colors, users can enlarge their creations to full display sizes without losing quality. Use JETimage Copy Software with its Precision Color Management or other color RIP packages to achieve excellent color-matched output on wide-format printers. Special monochrome copy modes, each fitted to specific original types are supported by the scanner's digital processing.

Automatic-Thickness Adjustment Control (ATAC)

Contex brings new opportunities to your business with the ability to scan up to 0.6 " (15 mm) thick originals. The ATAC feature makes inserting and scanning thick originals easy. Simply insert your thick original for scanning and press down the ATAC button. Sensors in the scanner monitor the pressure on the original's surface and position the guide plate at the optimal level. With ATAC technology, you are always ensured a perfect and even grip on any kind of original placed in the scanner.

Fast and Easy Replacement of Vital Scanner Parts

Now users can perform quick, easy and tool-free replacement of vital scanner parts. After long-term use, renewing parts such as the glass-plate, lamp, filters and white background will refresh your scanner and ensure optimal scanning results. Your scanner's system monitors the life-length of vital parts and outputs a message when it's time to consider a replacement. Save time and money on technical service and keep your business up and running without costly delays.

Image Enhancement Power

Contex scanners contain advanced technology for color and monochrome enhancement. The patented B/W adaptive thresholding works simultaneously on foreground, background, edges and other individual aspects of the original so you produce clean, crisp scans even from poor quality drawings. All processing is embedded in the hardware enabling you to perform powerful image enhancement without overhead and at speeds incomparable to standard software processing.

Flexible Connectivity

Contex lets you fit the connection to your immediate needs by offering two industry standard Plug'n'Play interface options: FireWire and USB2 (High Speed). Contex scanners protect your investment with support for STI (Still Image Interface) ensuring problem-free compatibility with current and future versions of Windows. COPYmate G18 and PUMA G600 come with the innovative iJET technology which contains an elaborate menu system that enables setup and activation of full scan-to-print and scan-to-file options directly from the scanner. PUMA comes with an external USB hard disk allowing faster scan and copy operations. LAN interfacing makes the scanner a powerful network device.

Automatic Scanner Maintenance

The Contex 3C Auto-Maintenance system keeps your cameras perfectly aligned, adjusted and calibrated for optimal image quality. The process is automatic - just insert the maintenance sheet and click the wizard's start button. The 3C Auto-Maintenance system aligns and stitches your cameras to a fraction of a pixel giving the highest wide format image precision available. Using patented Contex technology, camera stitching and black-white-points are constantly monitored and corrected while your scanner is running, letting you concentrate on your work and take optimal scanner performance for granted.

RoHS Compliancy - Scanners for a Better Environment

Contex scanners meet the strictest directives for a better environment. The RoHS European Market directives define maximum levels for certain substances in products containing electronic components and set rules that help minimize problems caused by electrical waste materials. Thus, Contex scanners are completely lead free. Contex scanners are RoHS compliant because we believe our environment is worth protecting.

Protecting the Environment

Contex scanners are built to obtain maximum levels of energy efficiency, providing energy conscious businesses and individuals the option to help protect the environment. Contex scanners automatically enter a low-power "sleep" mode after a period of inactivity. Spending a large portion of time in low-power mode not only saves energy but also helps scanner equipment run cooler and last longer. Contex' automatic power down function supports international low power value criteria. In addition to the standard timer clock setting feature already supported, power down can be set in WIDEsystem to fit the needs of each application and business.

HEAD OFFICE: Contex A/S
2 Svanevang
DK-3450 Allerød · Denmark
Ph: +45 4814 1122 · F: +45 4814 0122

USA: Contex
365 Herndon Parkway
Herndon, VA 20170 · USA
Ph: +1 (703) 925-2316 · F: +1 (703) 707-0825

info@contex.com
www.contex.com

